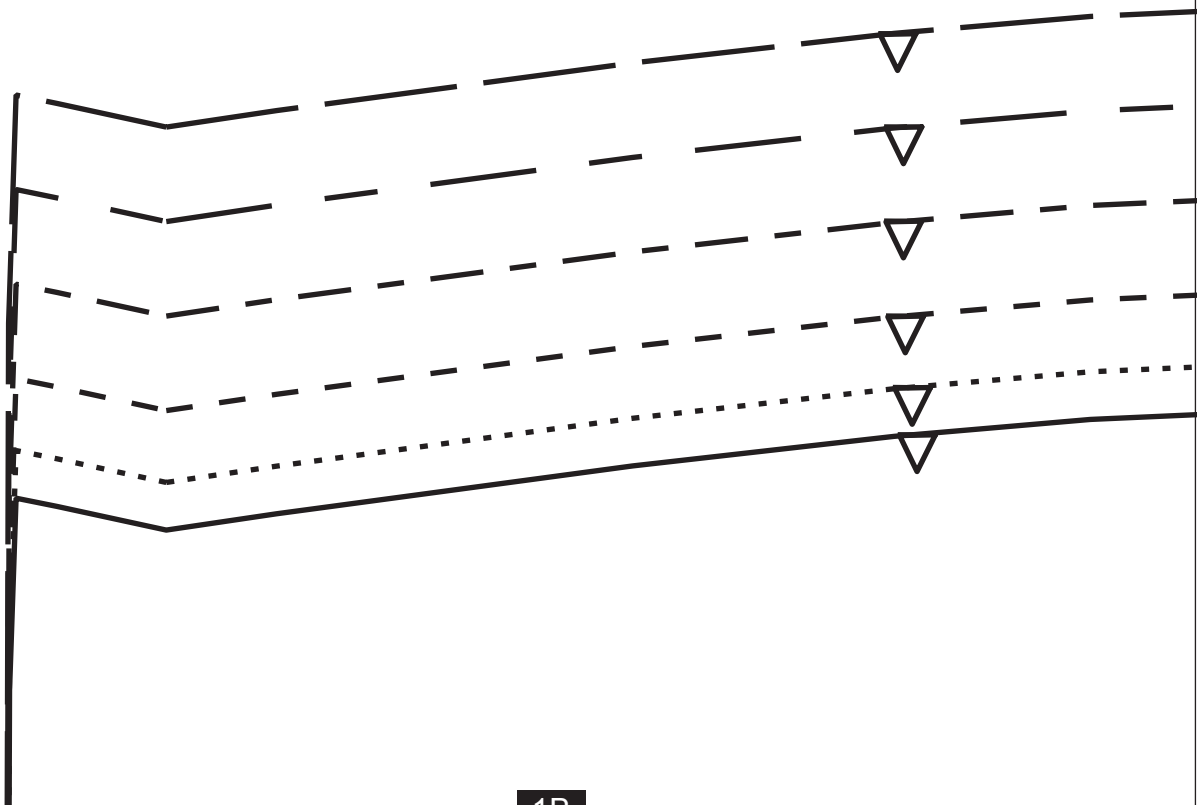


GESCHICKT EINGEFÄDELT

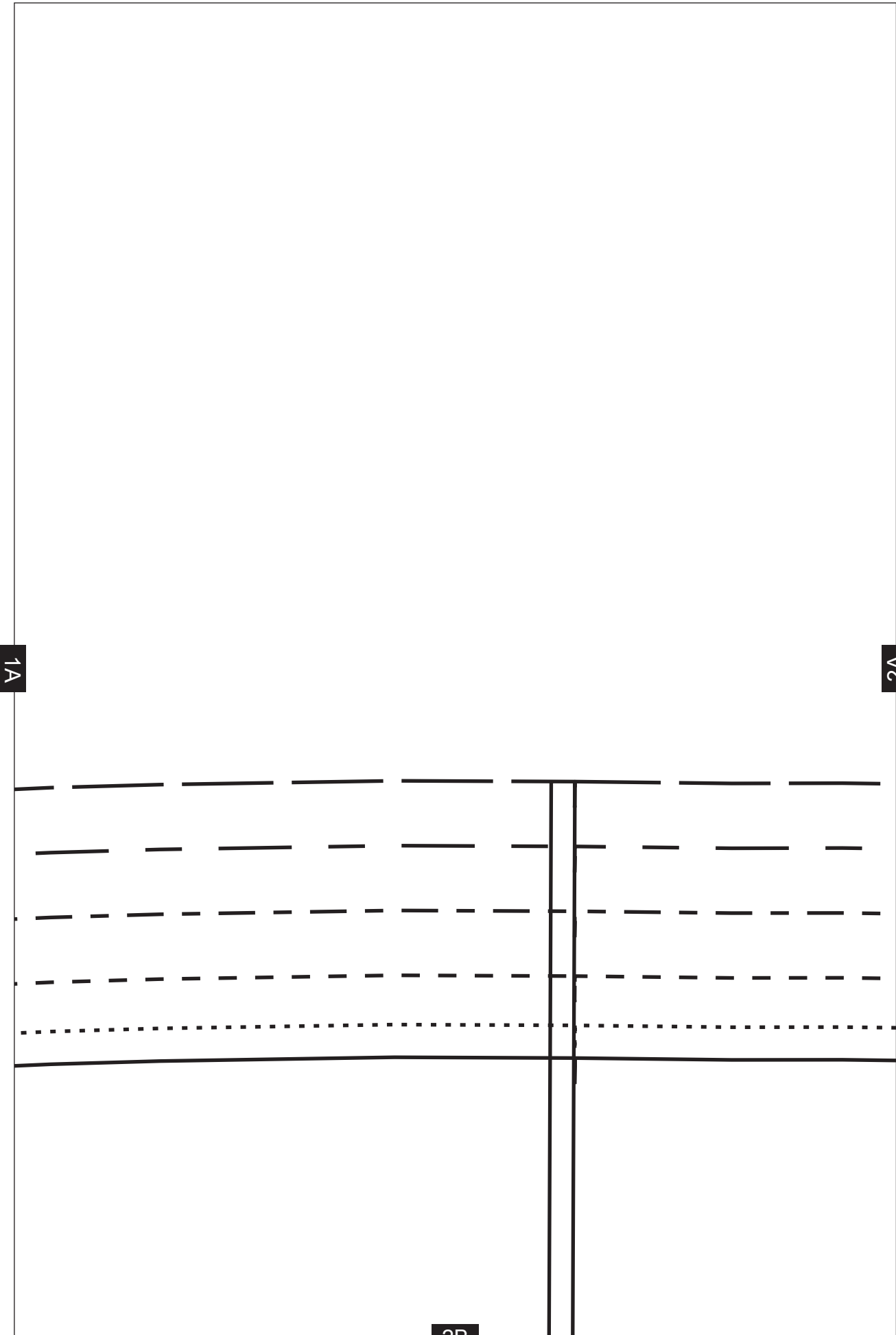
Tunika aus Seide
Design © Love Productions 2013
Nur für den privaten Gebrauch.

34	—————
36	- - - - -
38	- - - - -
40	- - - - -
42	——— ——— ———
44	—————

1A



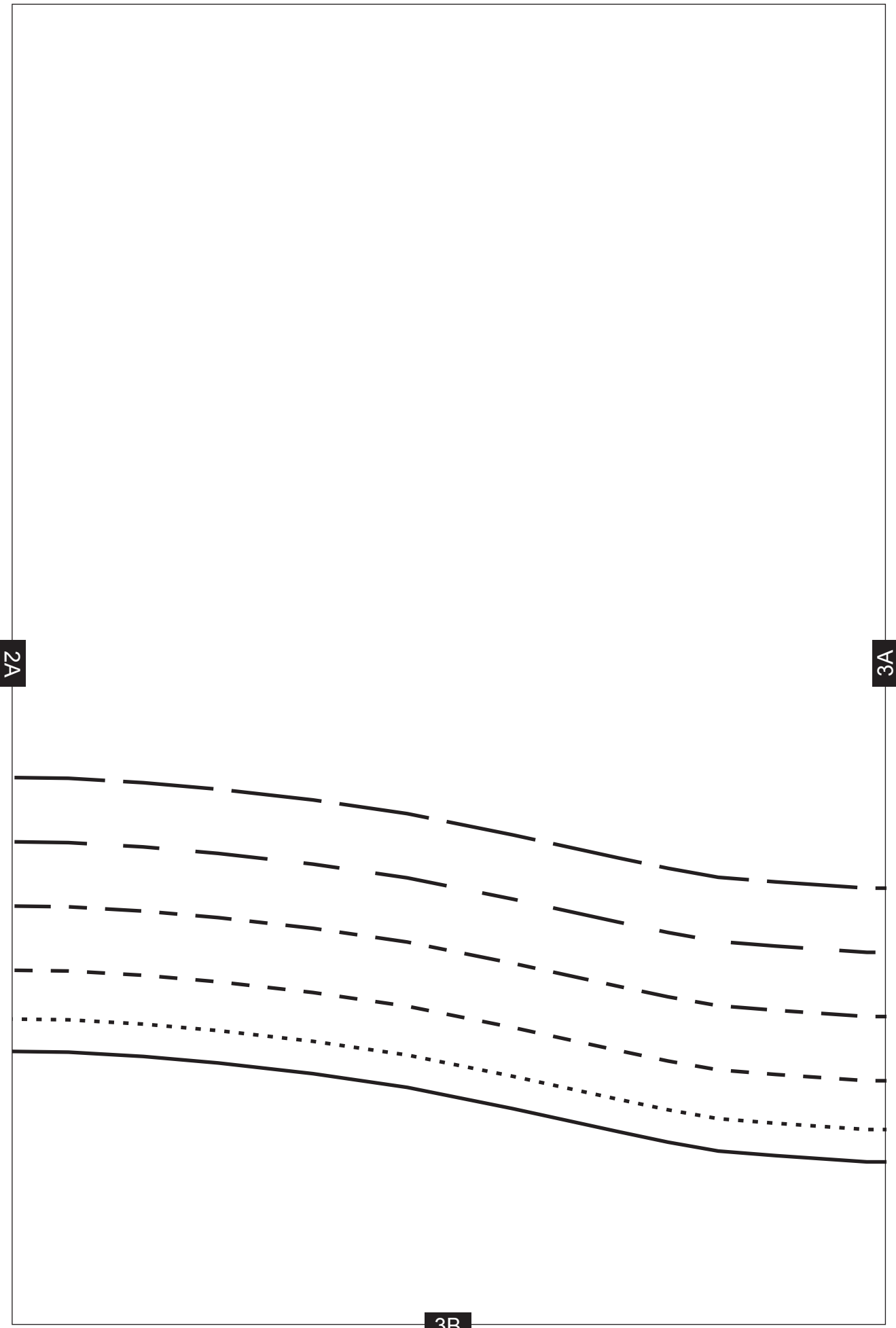
1B



1A

2A

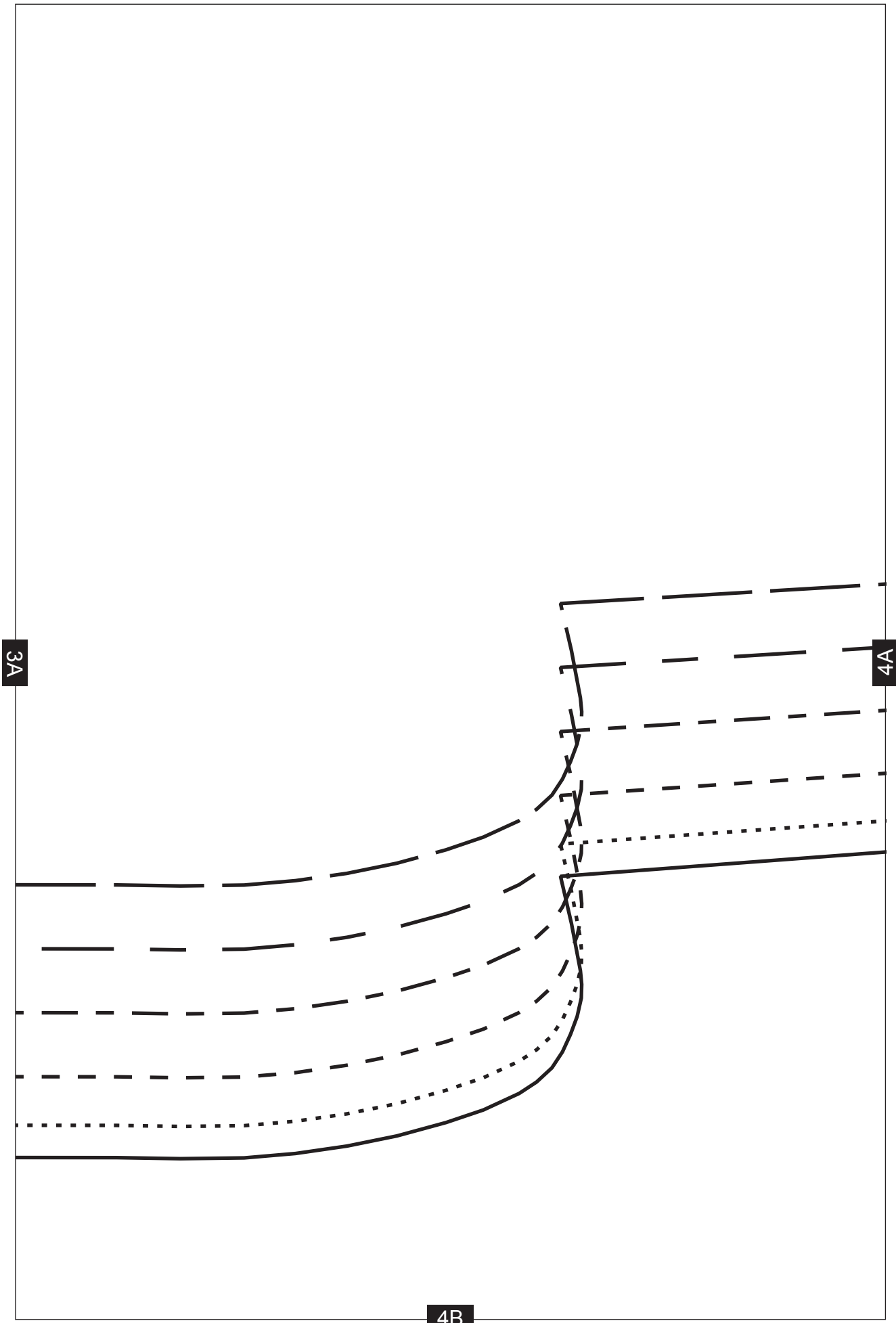
2B

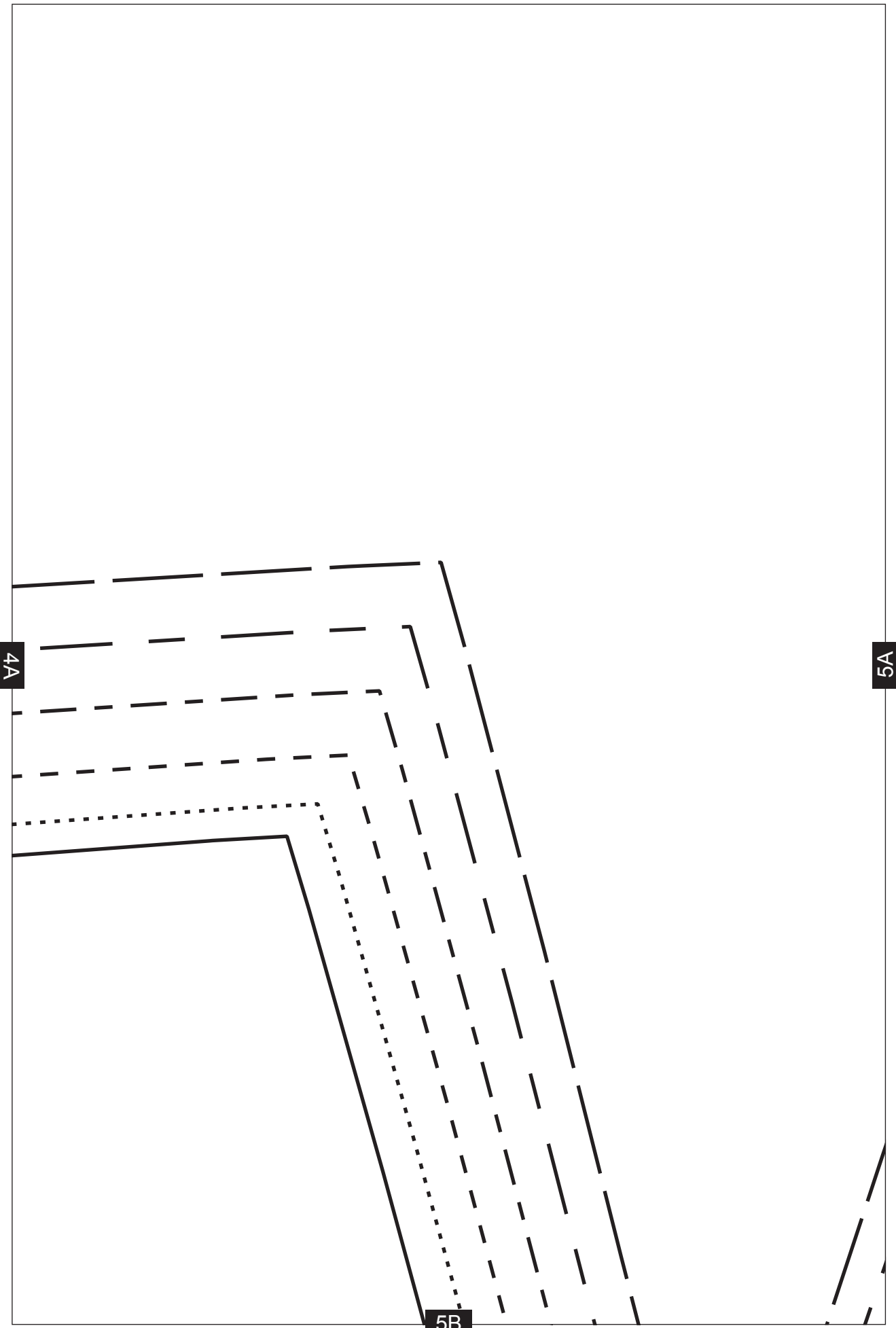


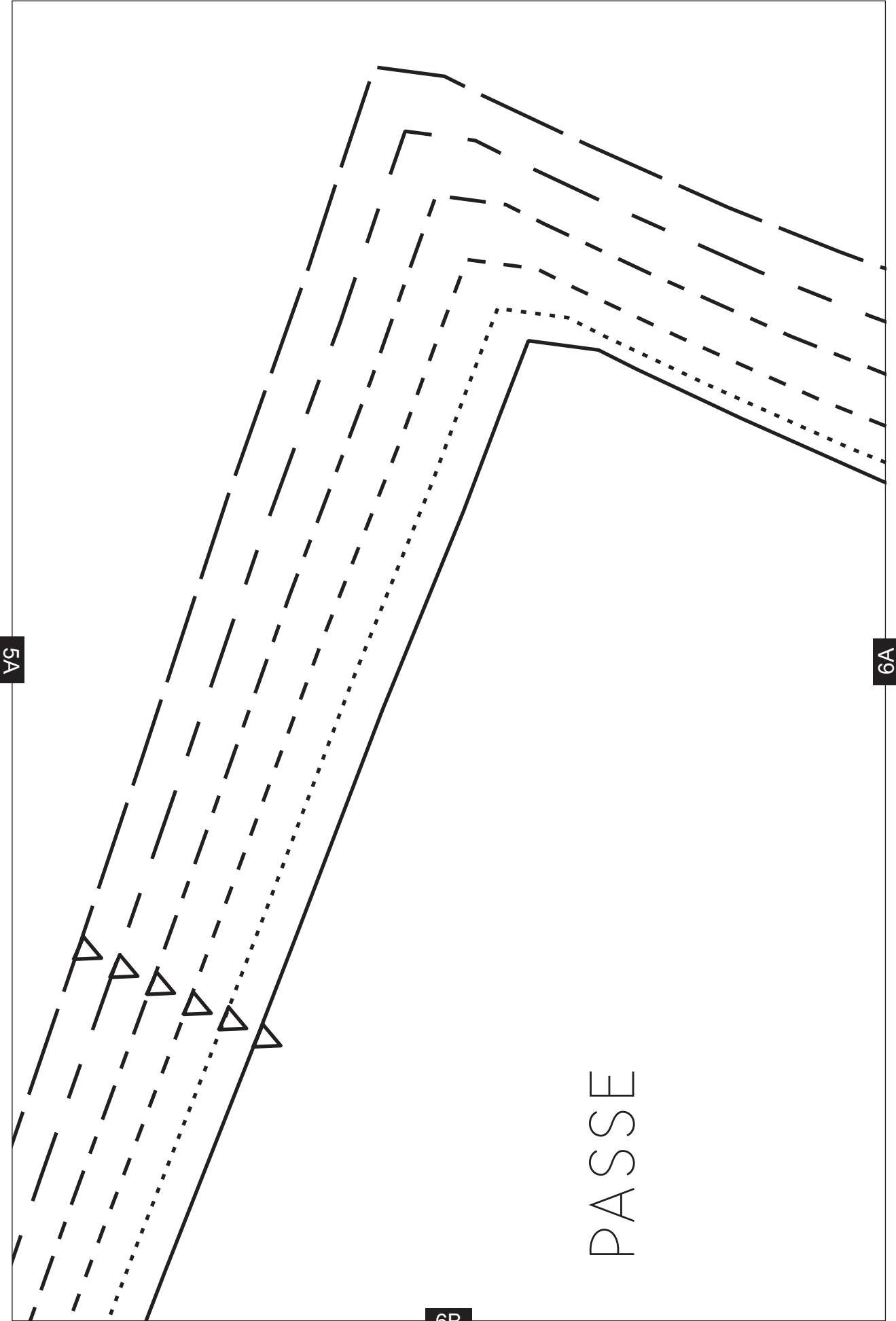
2A

3A

3B





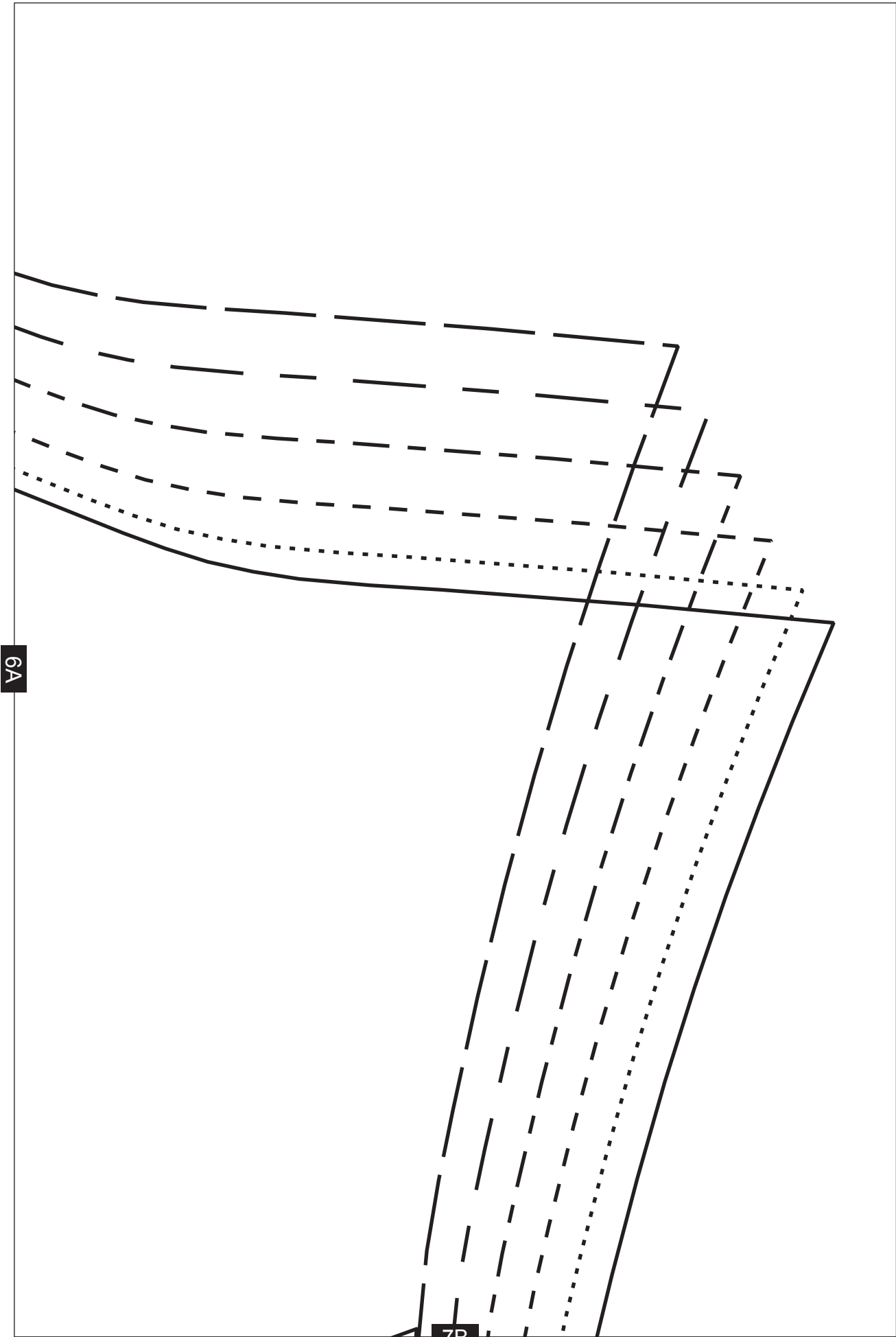


5A

6A

6B

PASSE



1B

TESTFELD
10 cm × 10 cm

8A

8B

2B

8A

9A

HIER KÜRZEN ODER LÄNGEN

9B



3B

9A

10A

VORDERE MITTELNAHT

10B

4B

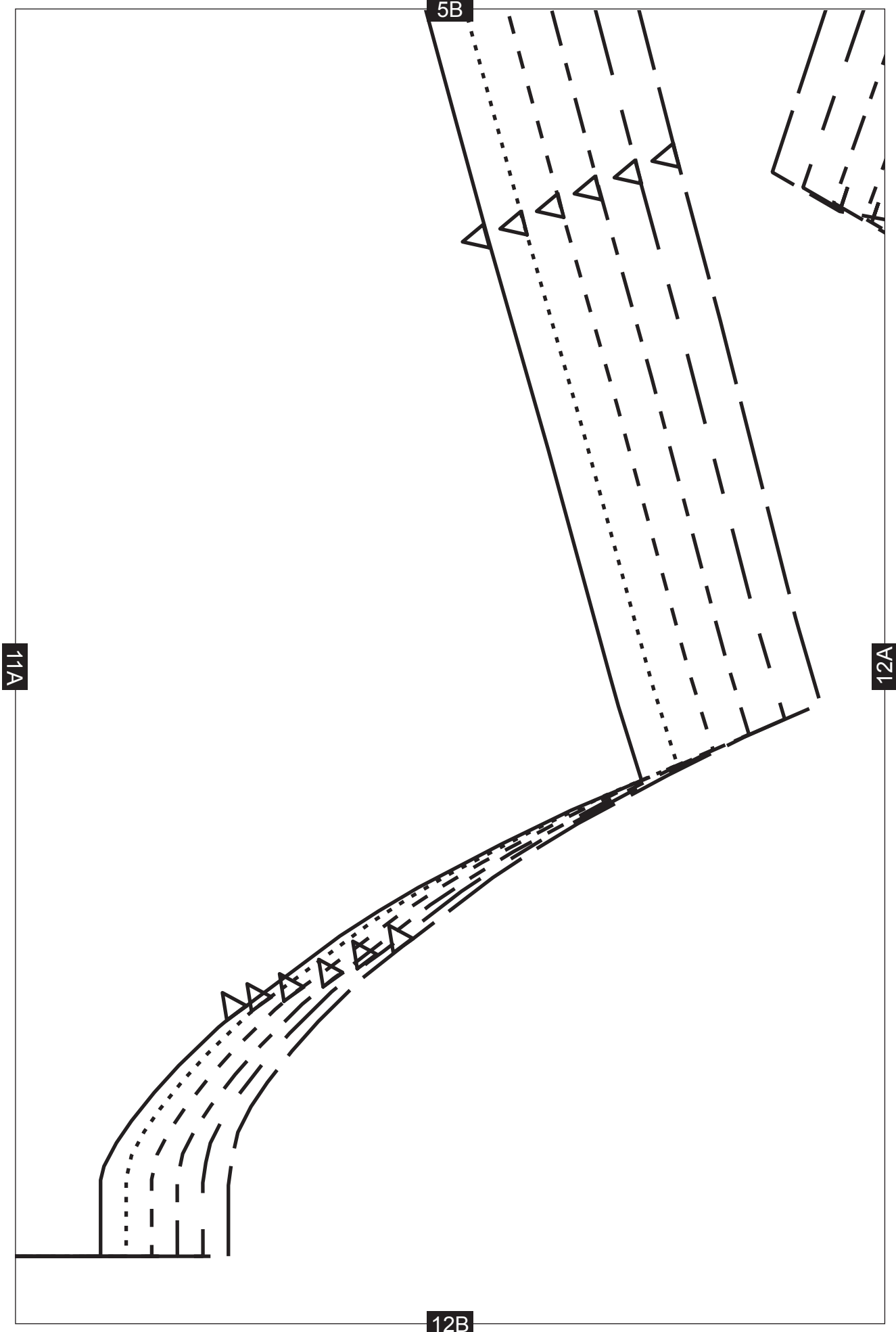
VORDERTEIL



10A

11A

11B

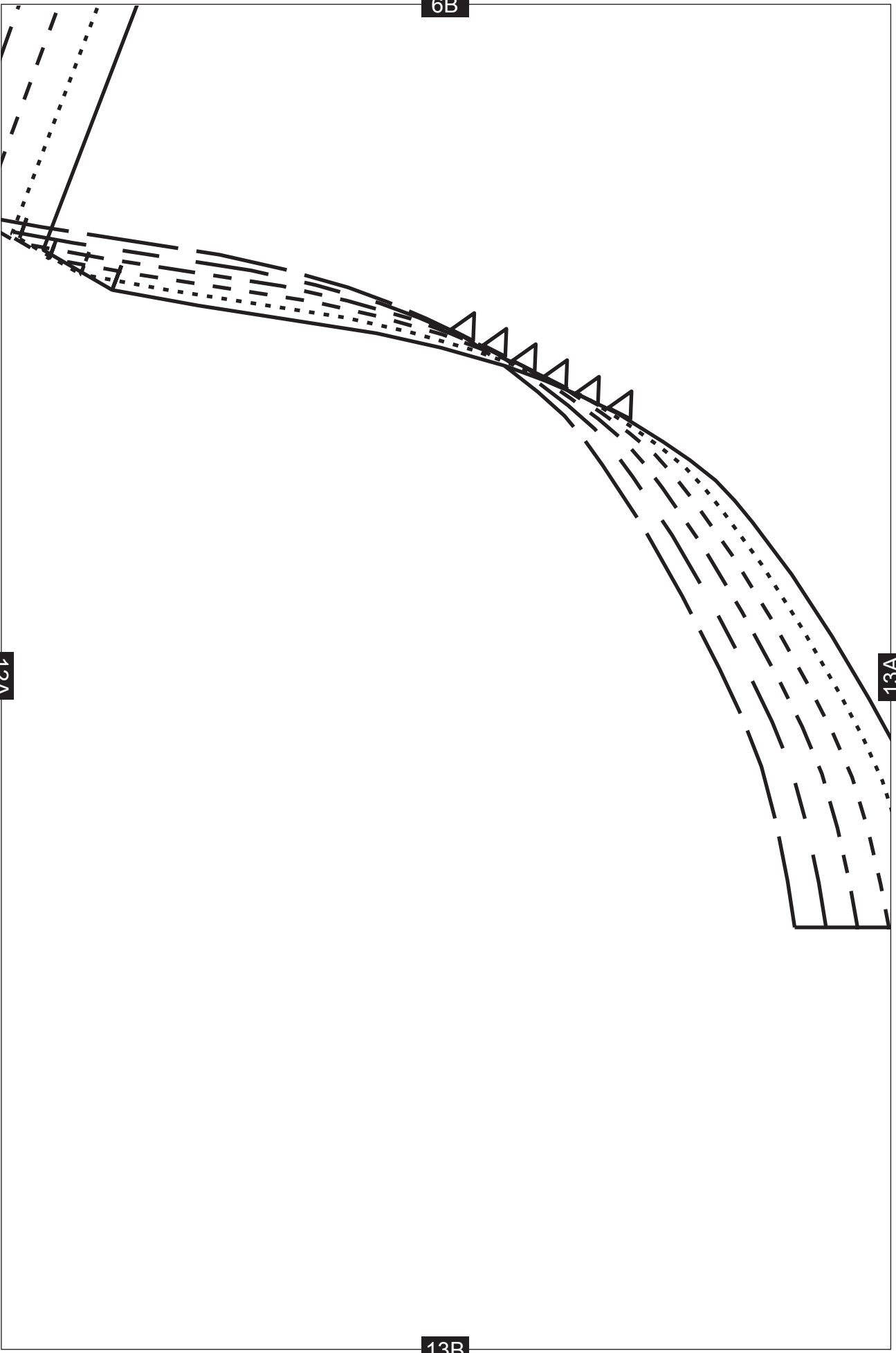


6B

12A

13A

13B



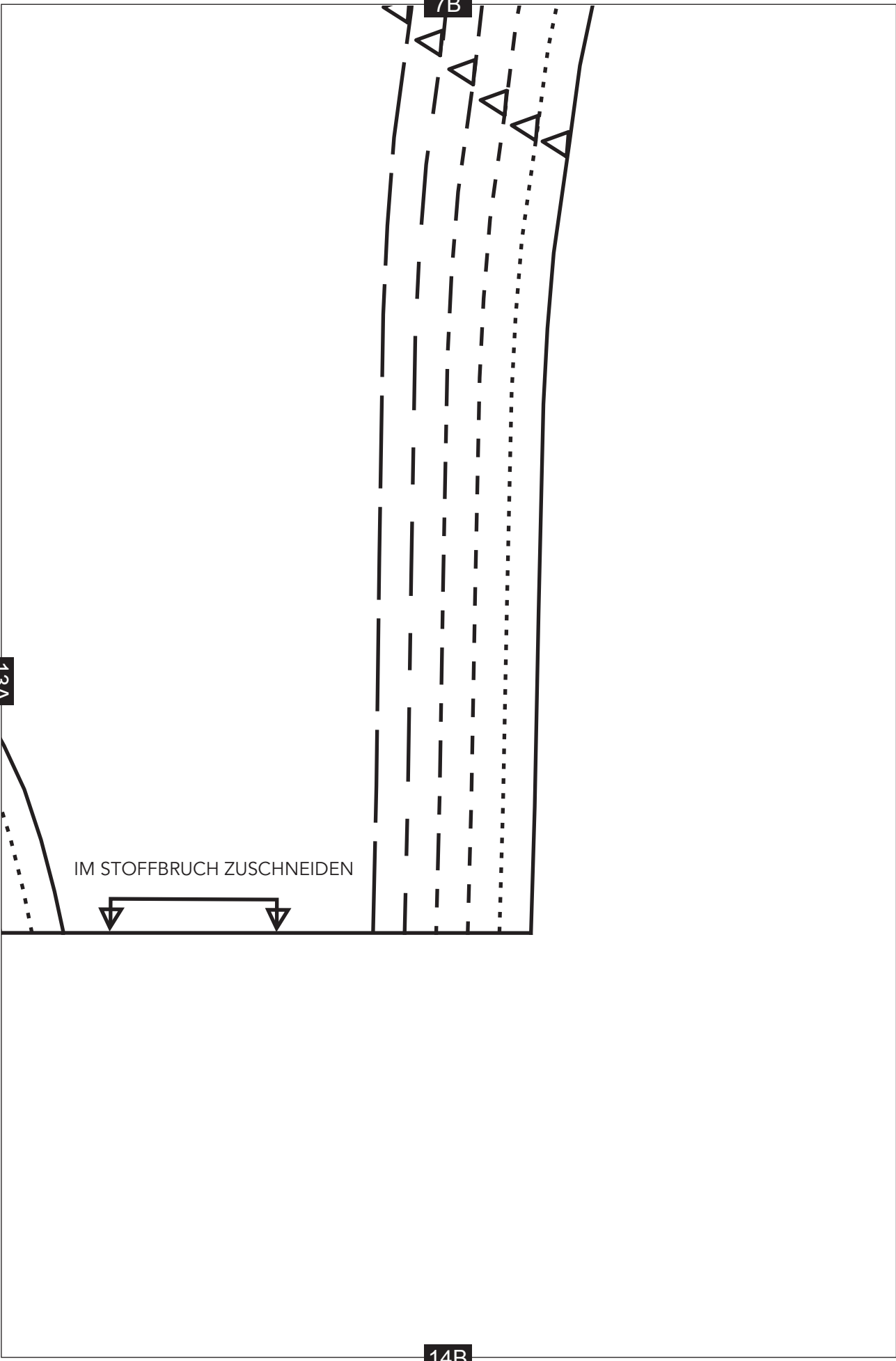
7B

13A

IM STOFFBRUCH ZUSCHNEIDEN



14B



8B



15A

15B

9B

15A

16A

16B

10B

HINTERE MITTELNAHT

16A

17A

17B

11B

17A

18A

RÜCKENTEIL

18B

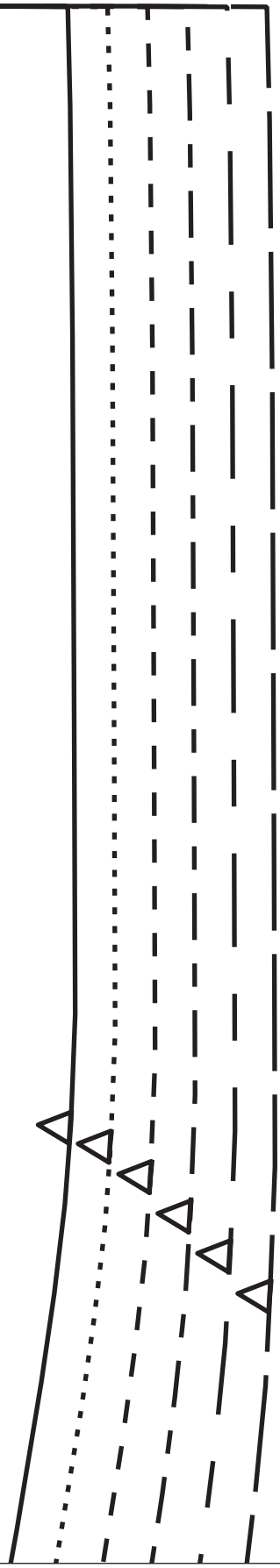


12B

18A

19A

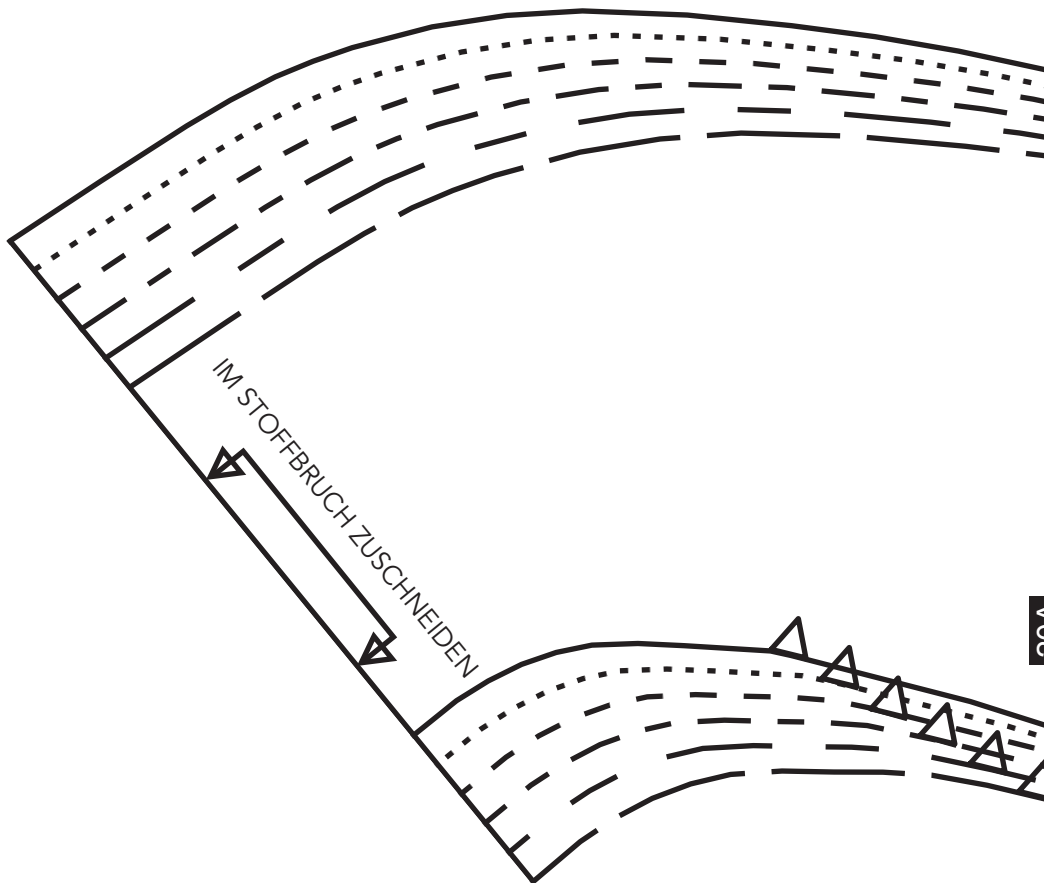
19B



13B

19A

20A



20B

14B

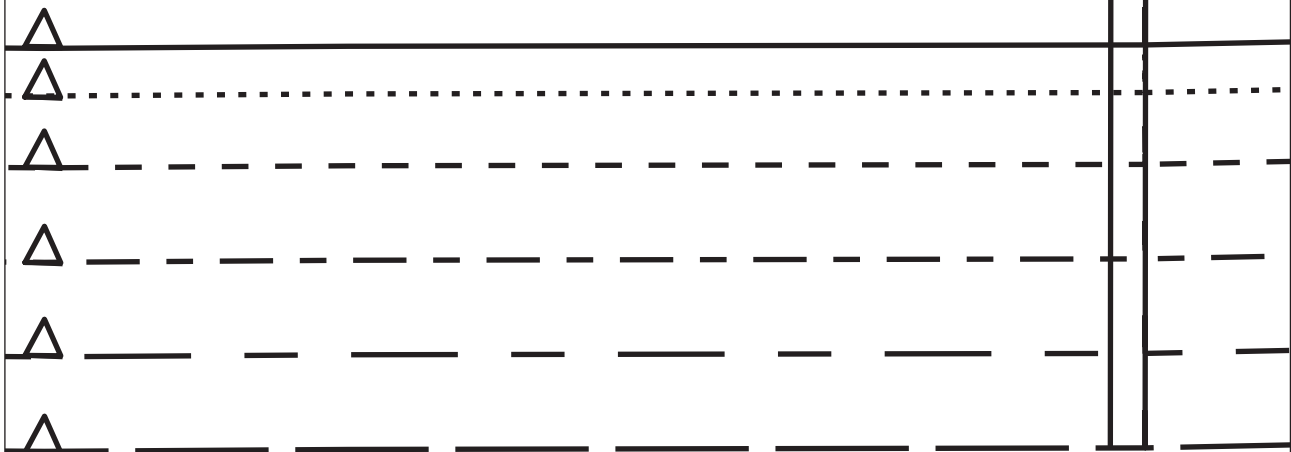
VORDERER
BELEG

20A

21B

A set of handwriting practice lines. It consists of a solid top line, a dotted midline, and several dashed lines below. The dashed lines are arranged in a way that suggests they are for practicing the height and placement of letters, with some lines being shorter than others to indicate different letter heights.

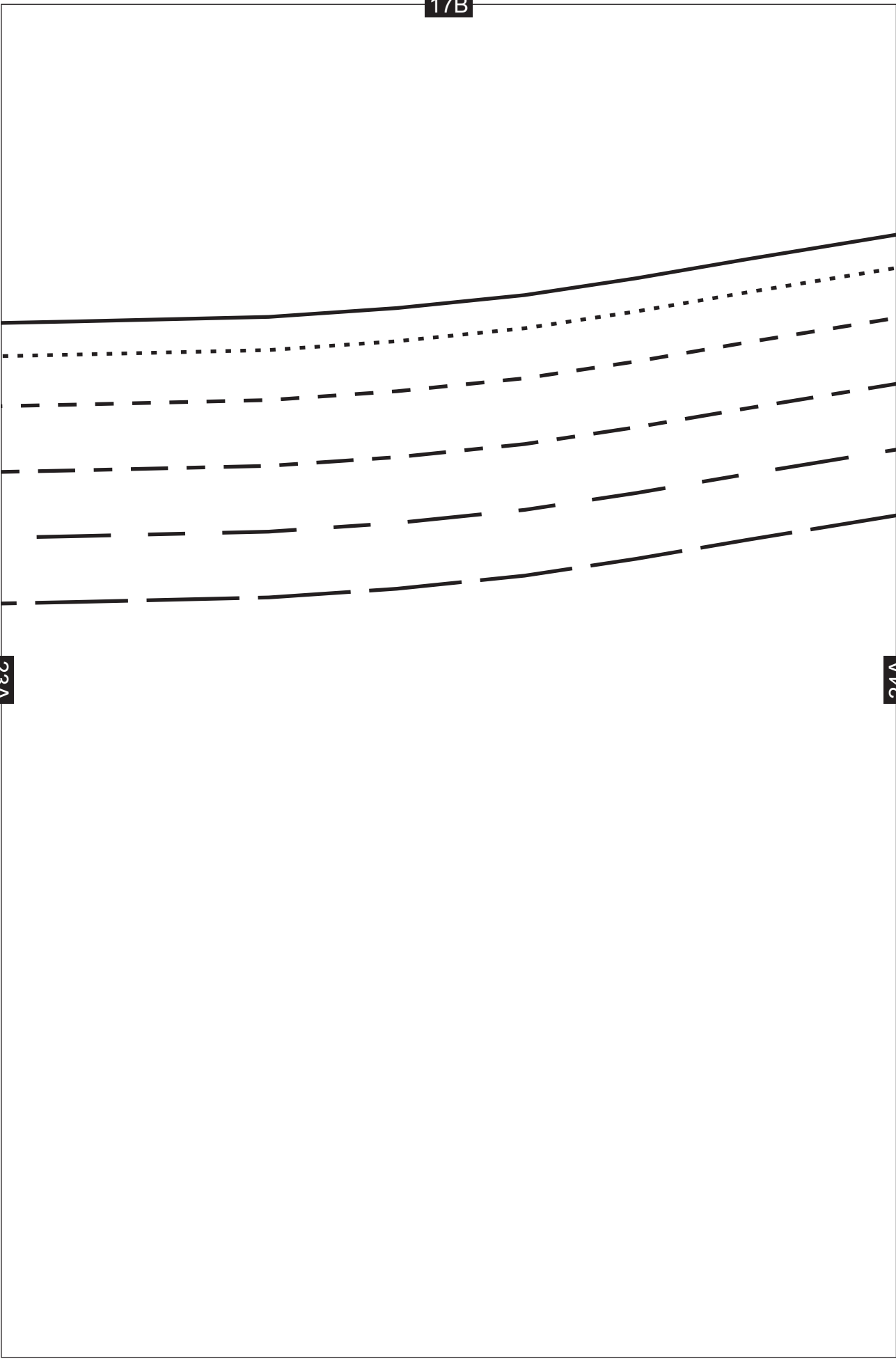
16B



22A

23A

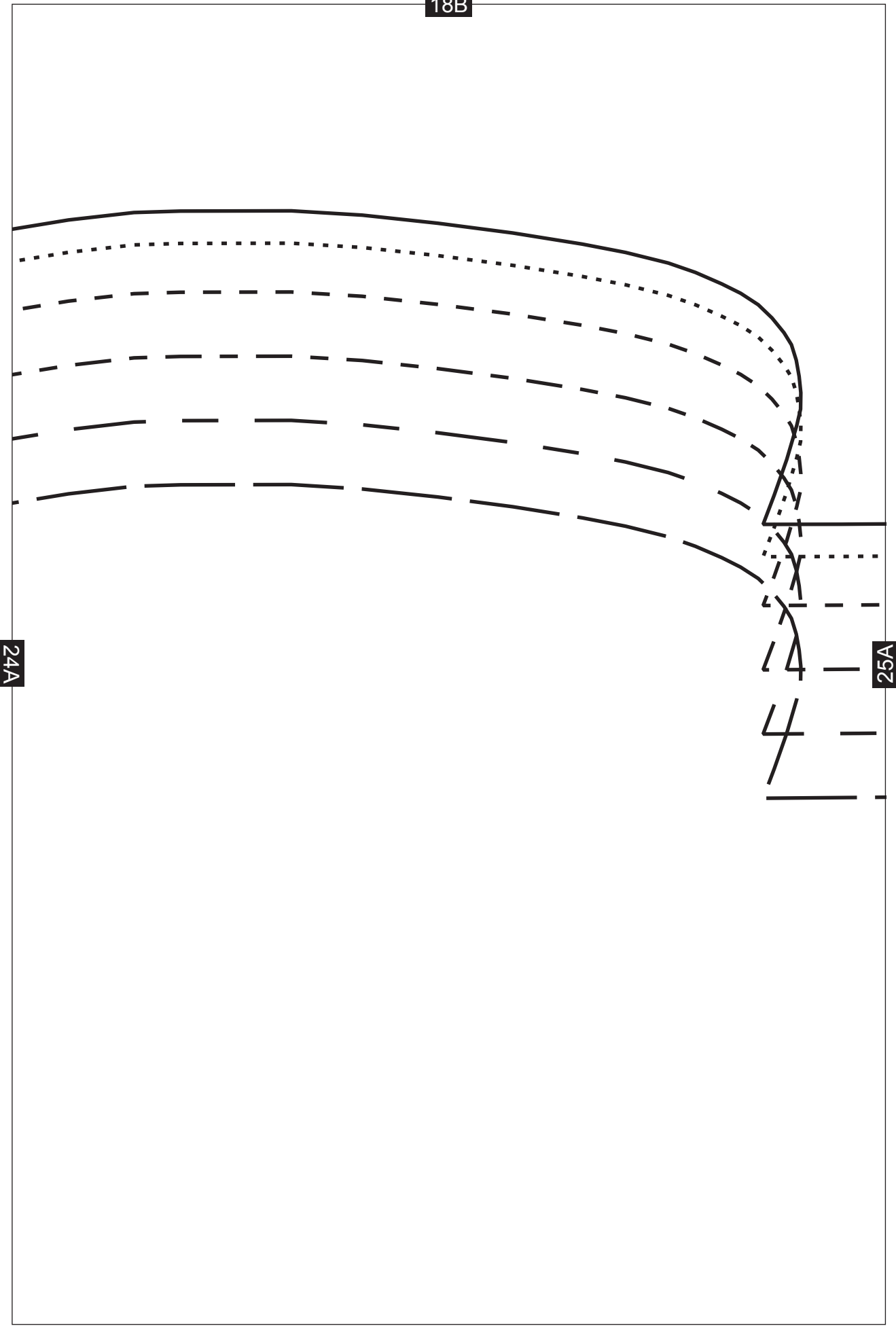
17B



23A

24A

18B



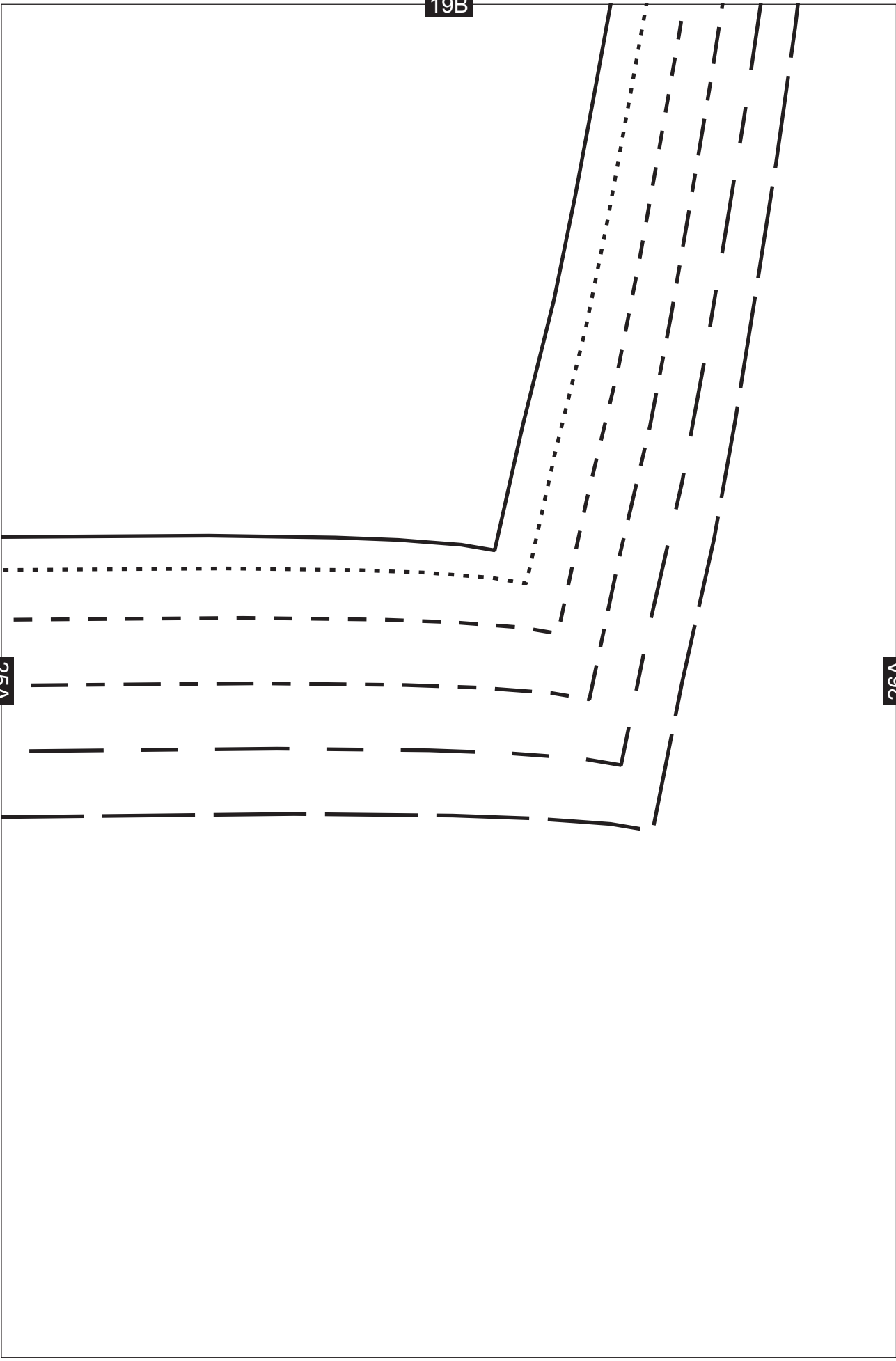
24A

25A

19B

25A

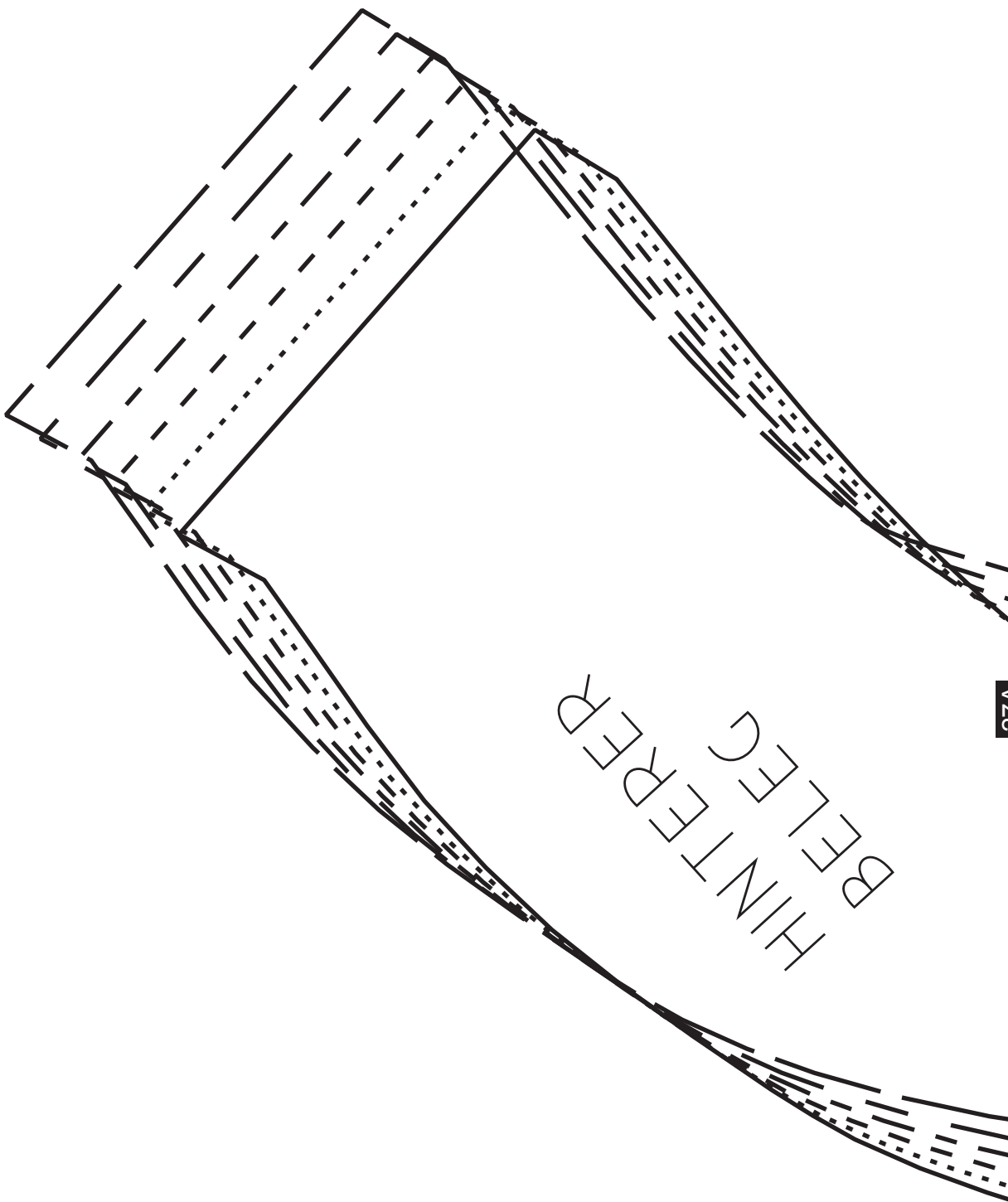
26A



20B

26A

27A



HINTERPRED
BELEG

21B

27A

